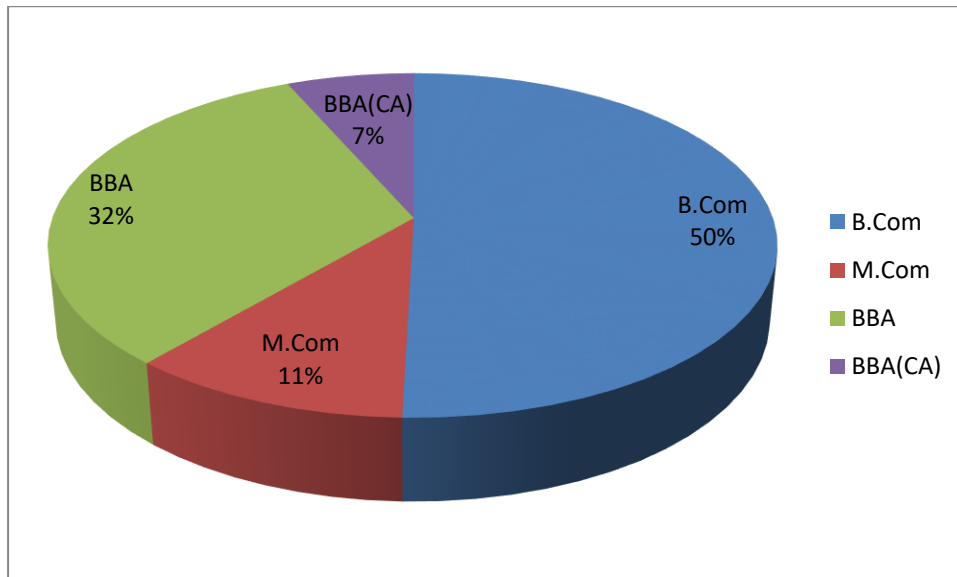
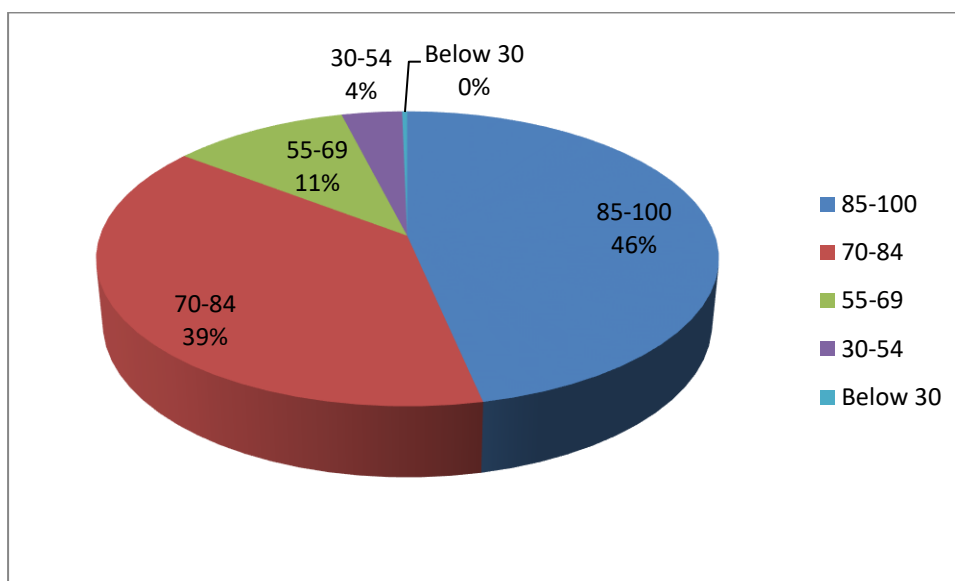


Student Satisfaction Survey (SSS) on overall institutional performance for the year 2019-20.

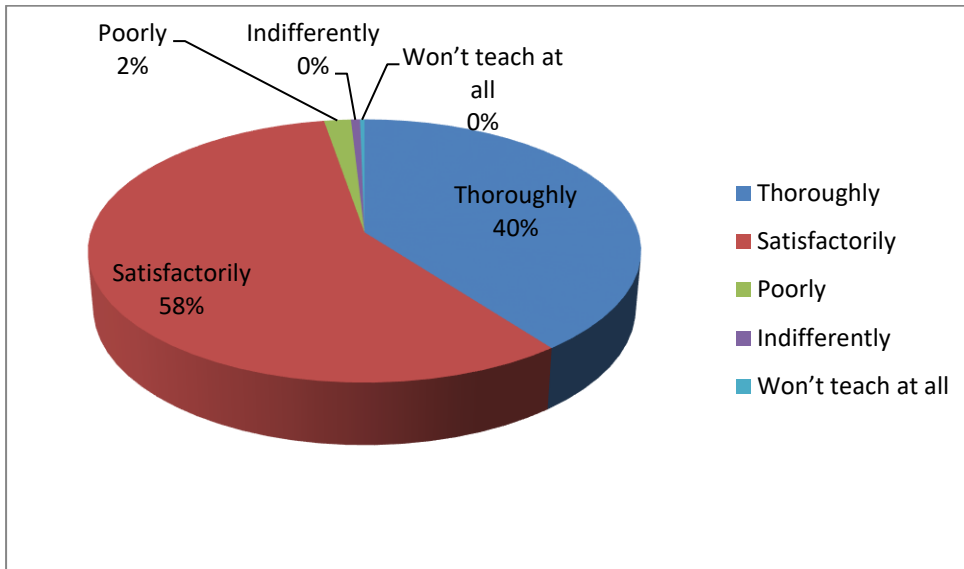
1. Programme studied in the academic year 2019-20?



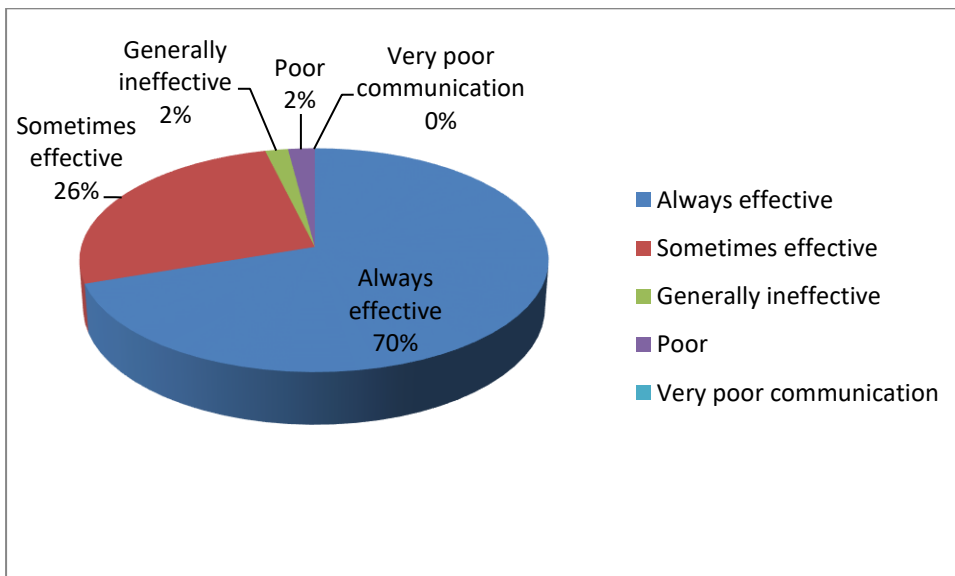
2. What was the percentage of syllabus covered in the class?



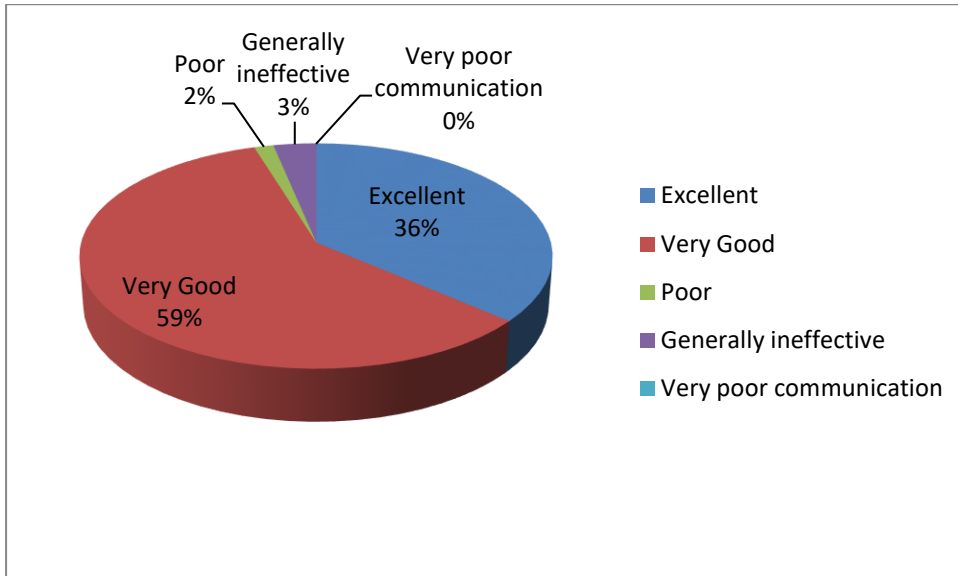
3. What was the teachers subject specific preparedness for the class?



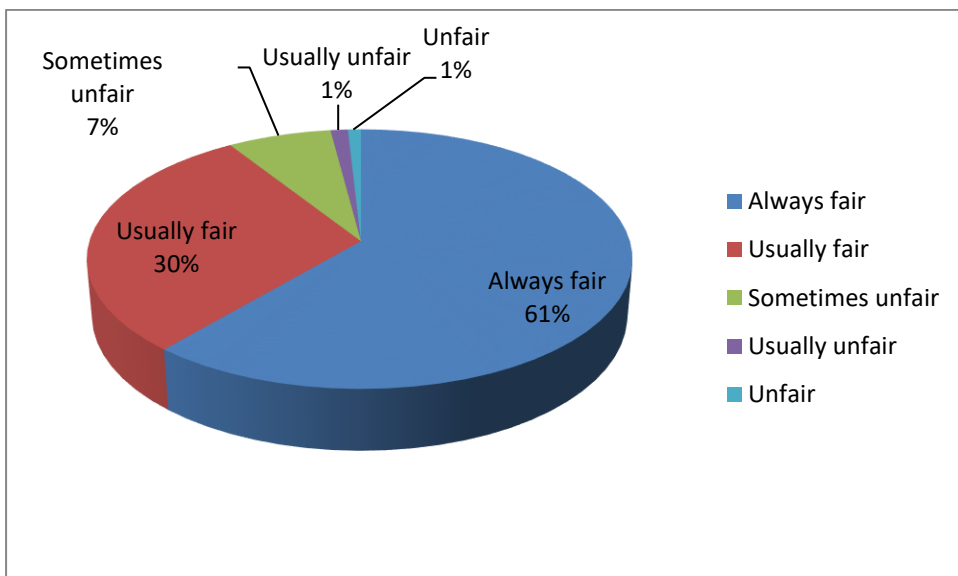
4. What was the level of communication of the teachers?



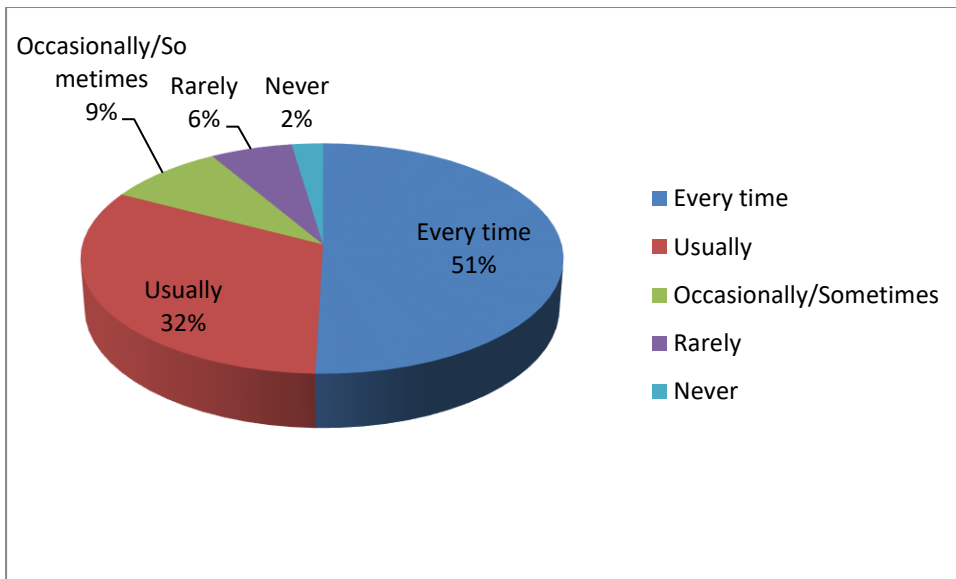
5. The teachers' approach to teaching can best be described as:



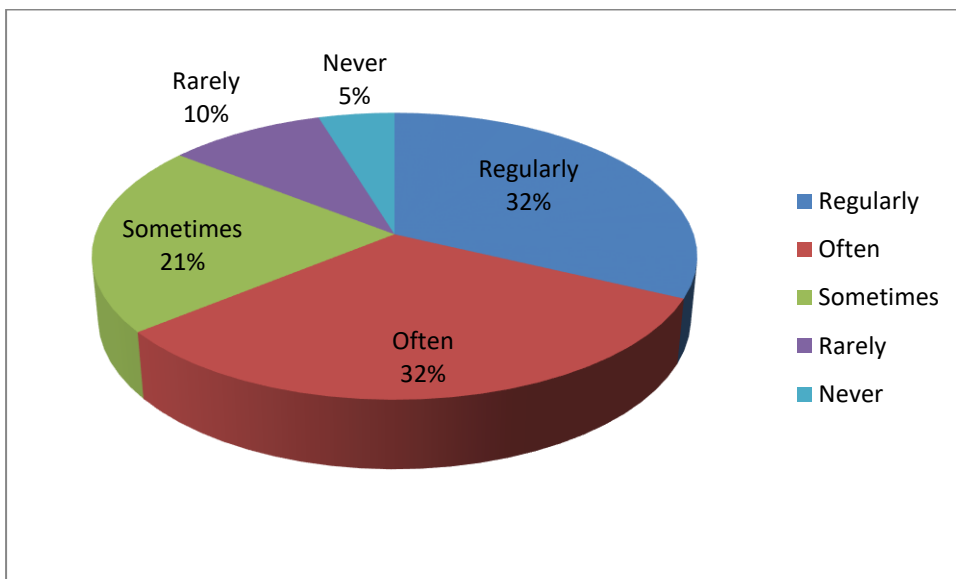
6. How fair were the teachers in internal evaluation of the students?



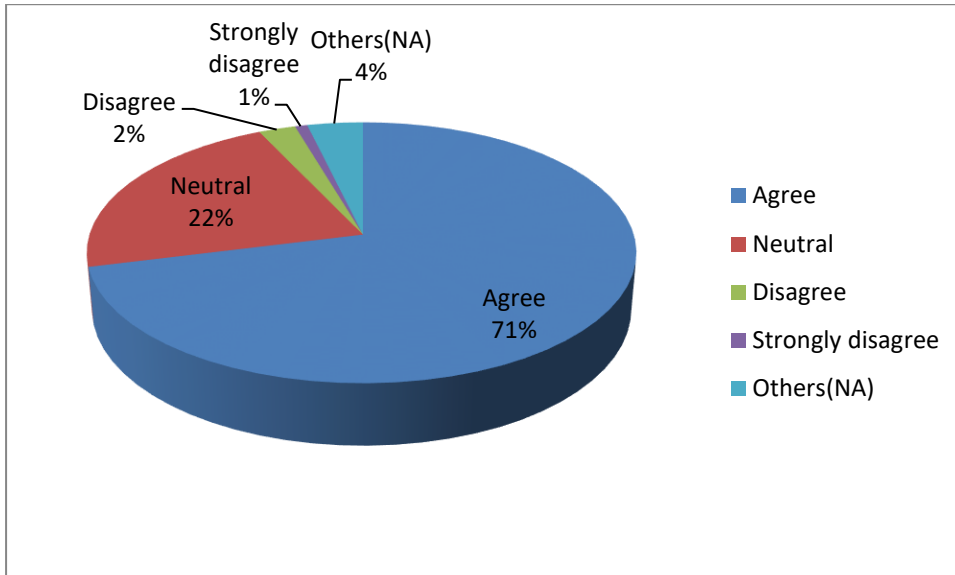
7. Was your performance in assignments, examinations discussed with you?



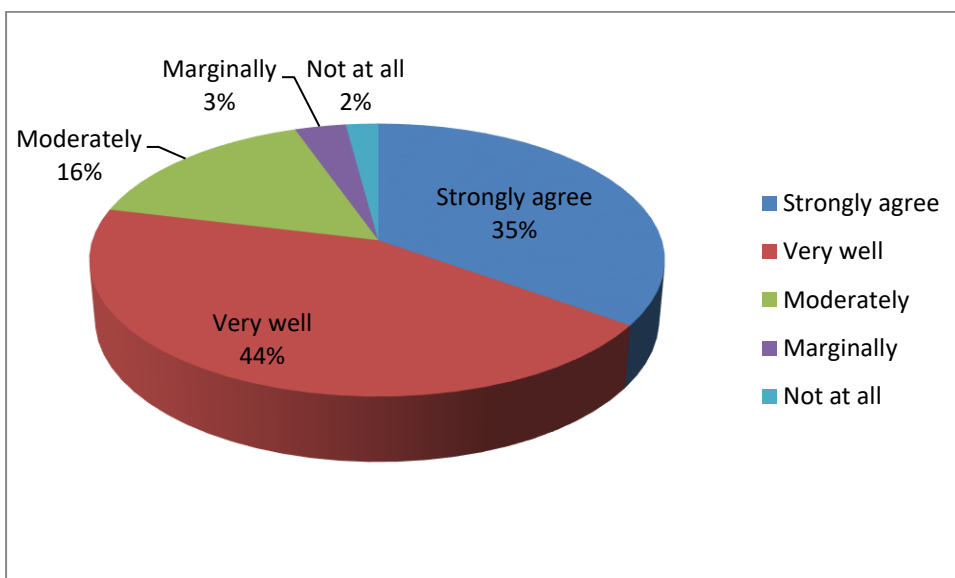
8. Does the institute take active interest in promoting internship, student exchange, field visits for students.



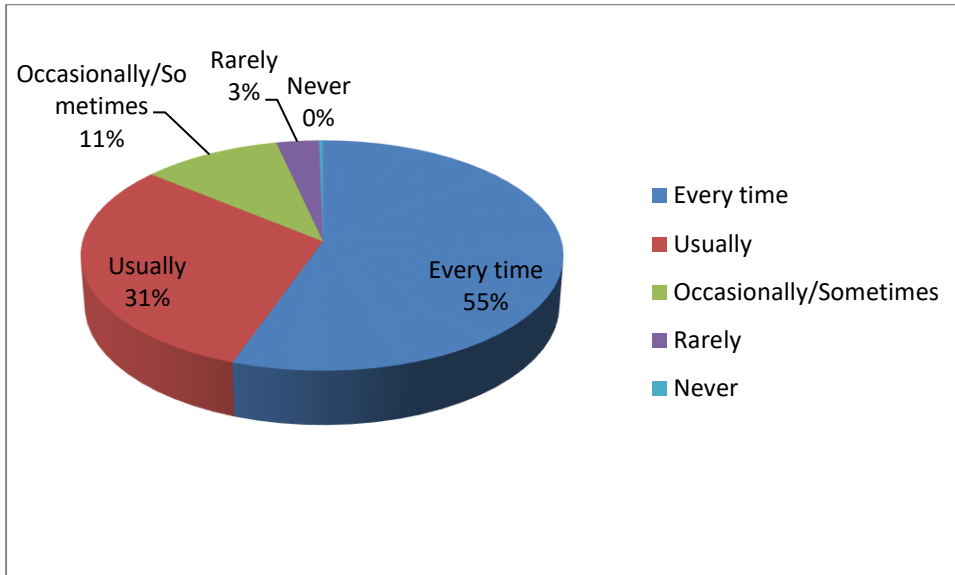
9. Do the teaching and mentoring process in your institution facilitate cognitive, social and emotional growth?



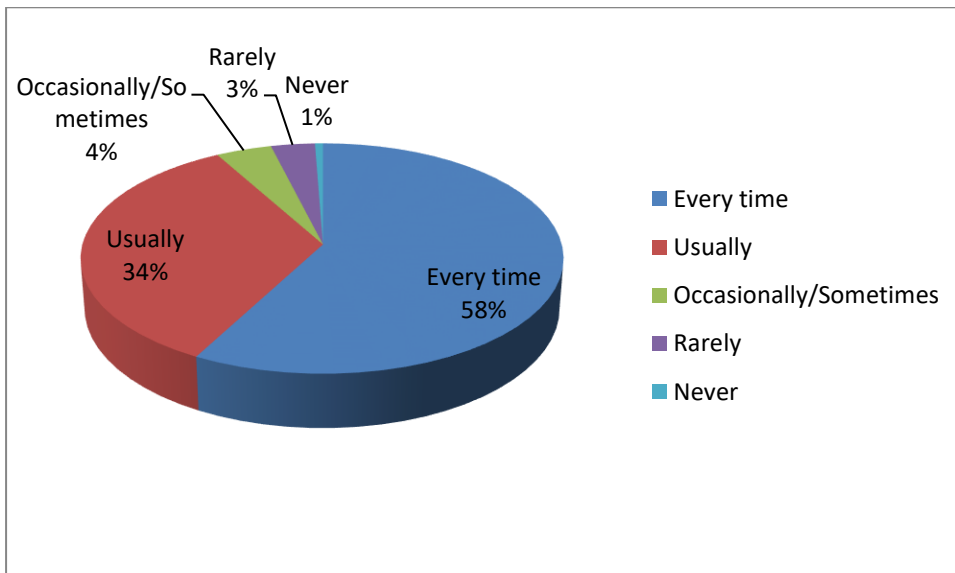
10. Does the institution provide multiple opportunities to learn and grow?



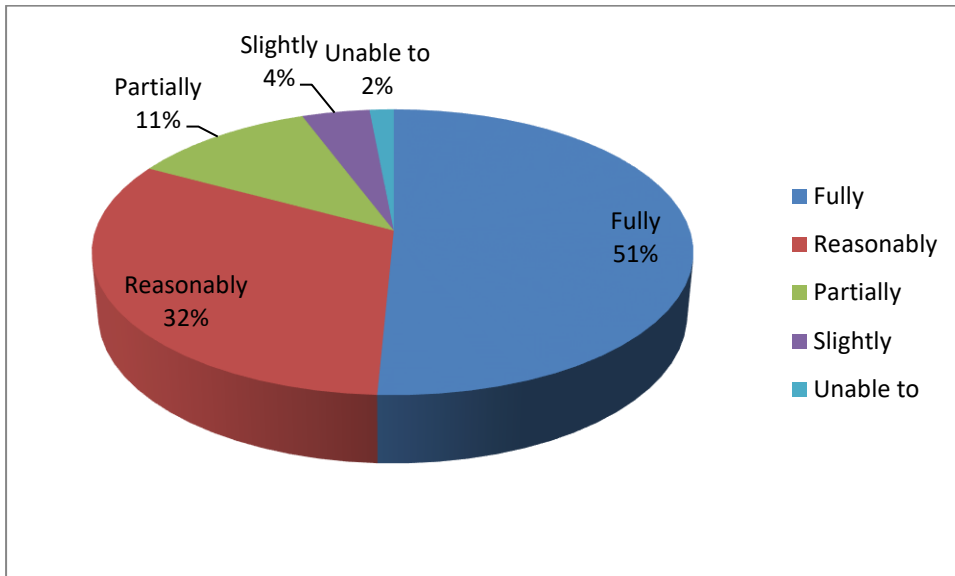
11. Do teachers inform you about your expected competencies, course outcomes and programme outcomes?



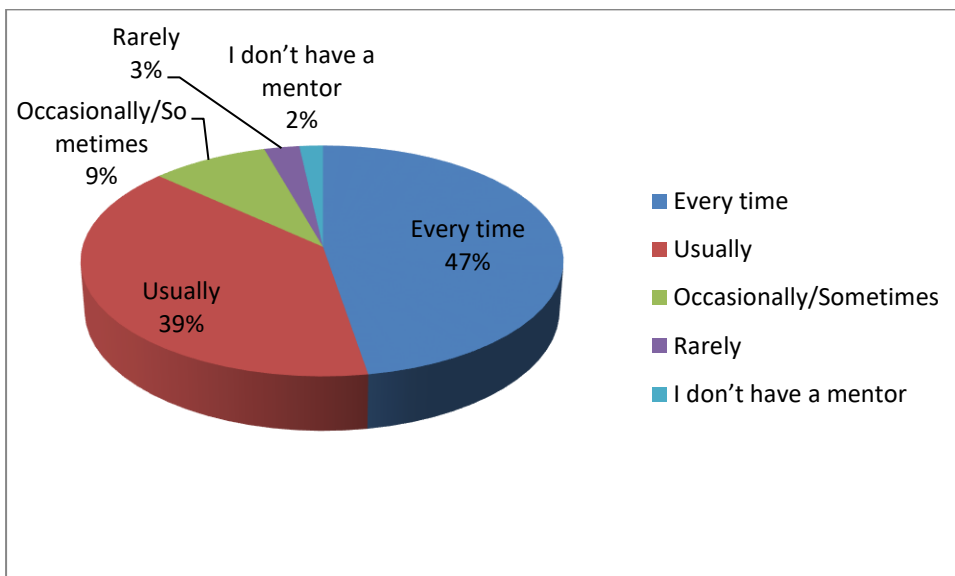
12. Do the teachers illustrate the concepts?



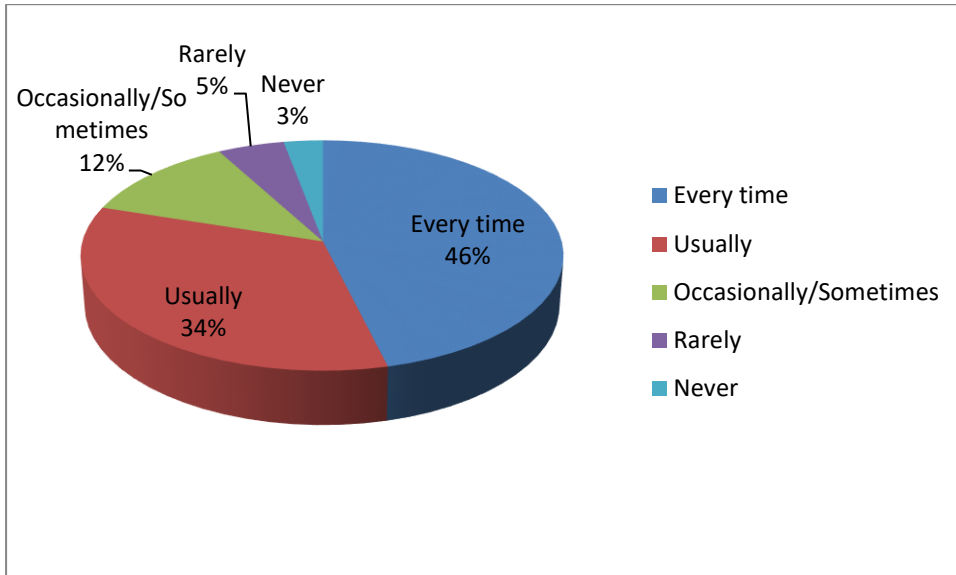
13. Do the teachers identify your strengths and encourage you with providing right level of challenges?



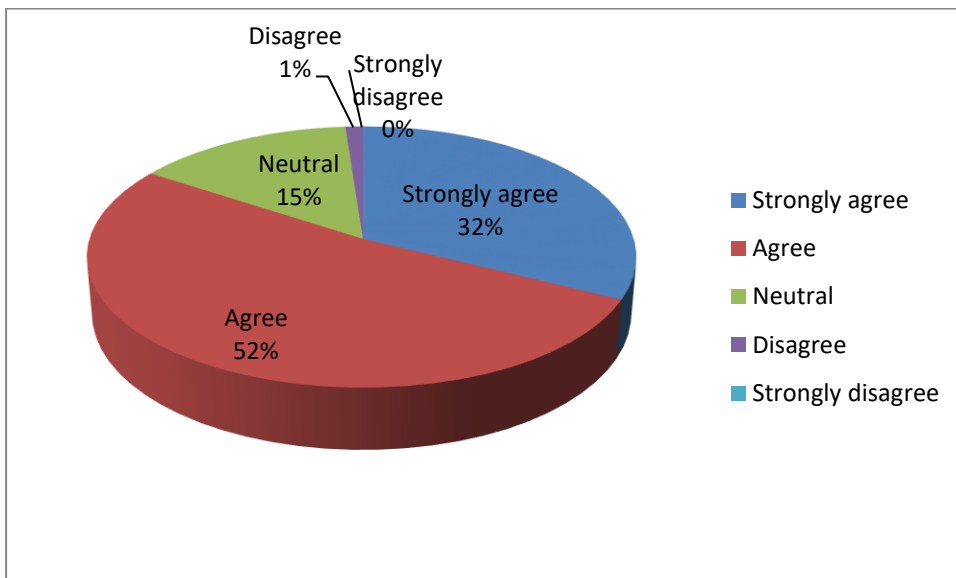
14. Does your mentor follow-up with an assigned task to you?



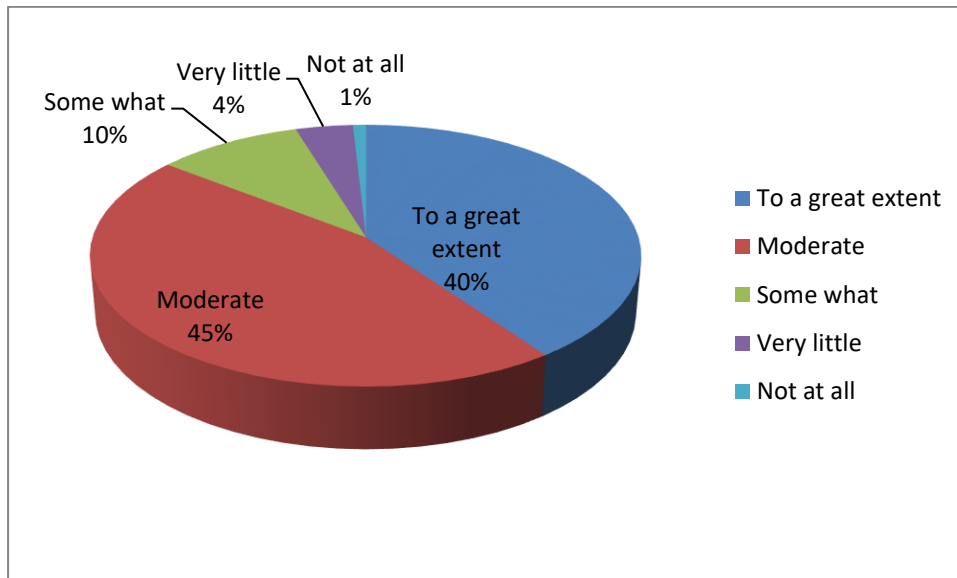
15. Teachers are able to identify your weaknesses and help you to overcome them.



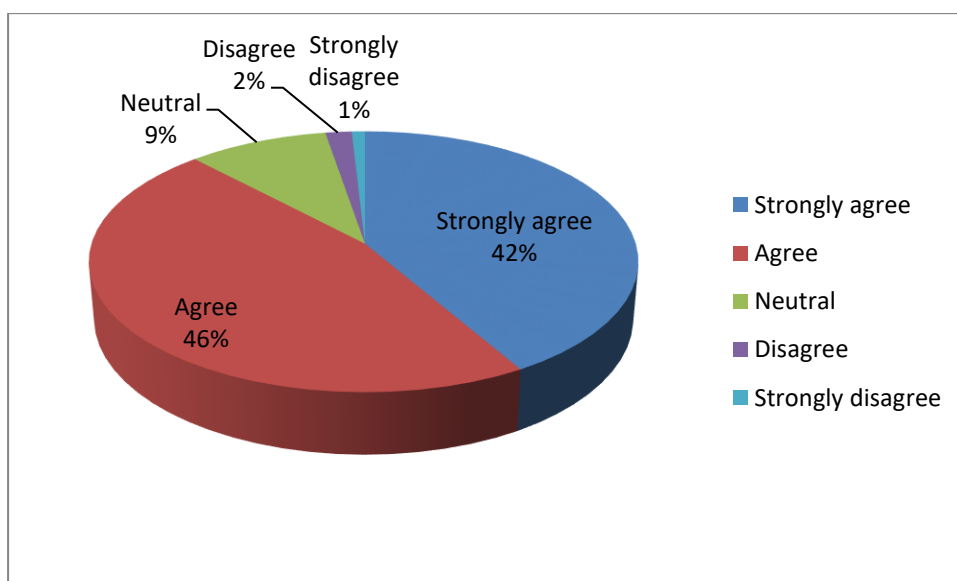
16. The institution makes effort to engage students in the monitoring, review and continuous quality improvement of the teaching learning process.



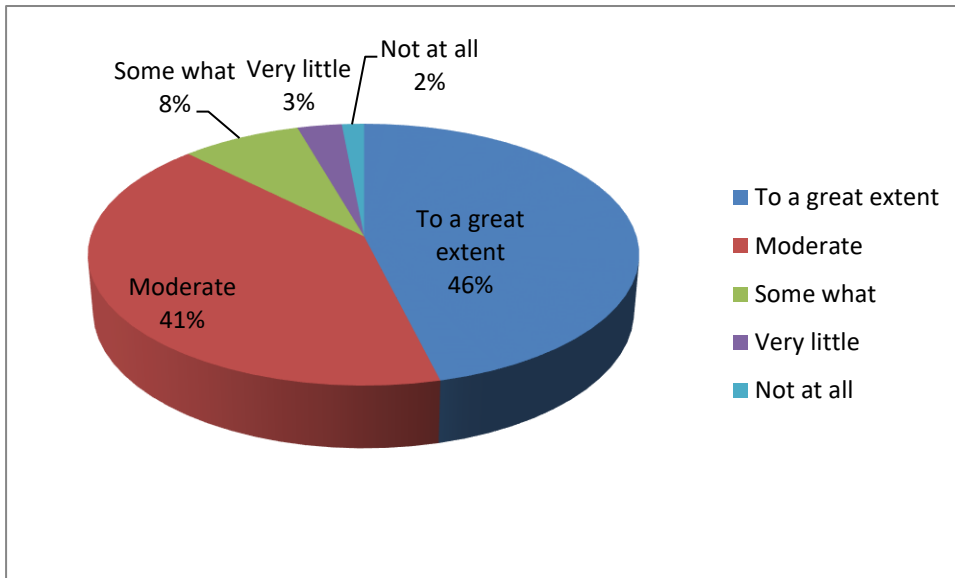
17. The institute/ teachers use student centric methods, such as experiential learning, participative learning and problem solving methodologies for enhancing learning experiences.



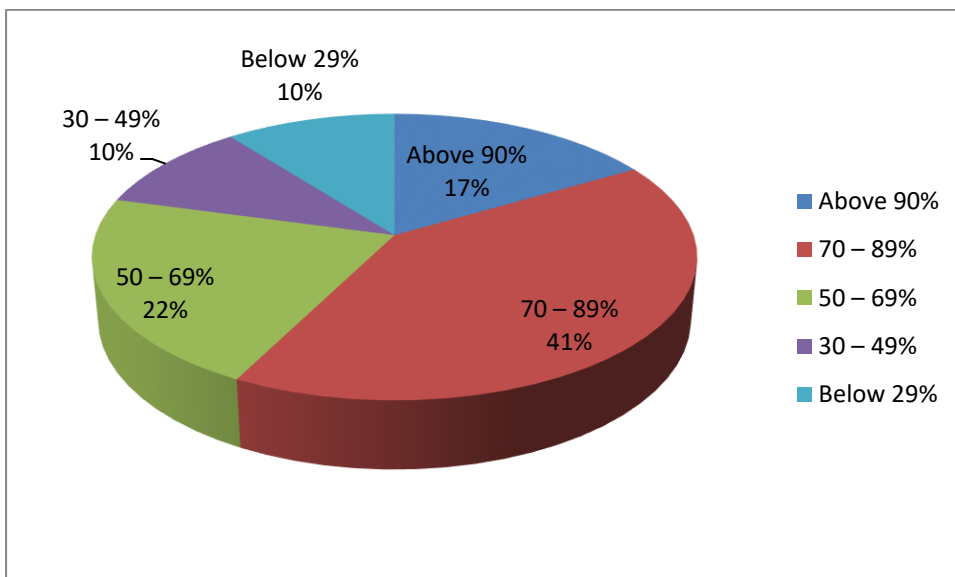
18. Teachers encourage you to participate in extracurricular activities.



19. Efforts are made by the institute/ teachers to inculcate soft skills, life skills and employability skills to make you ready for the world of work.



20. What percentage of teachers use ICT tools such as LCD projector, Multimedia, etc. while teaching?



21. How do you rate the overall quality of teaching-learning process in your institute ?

